



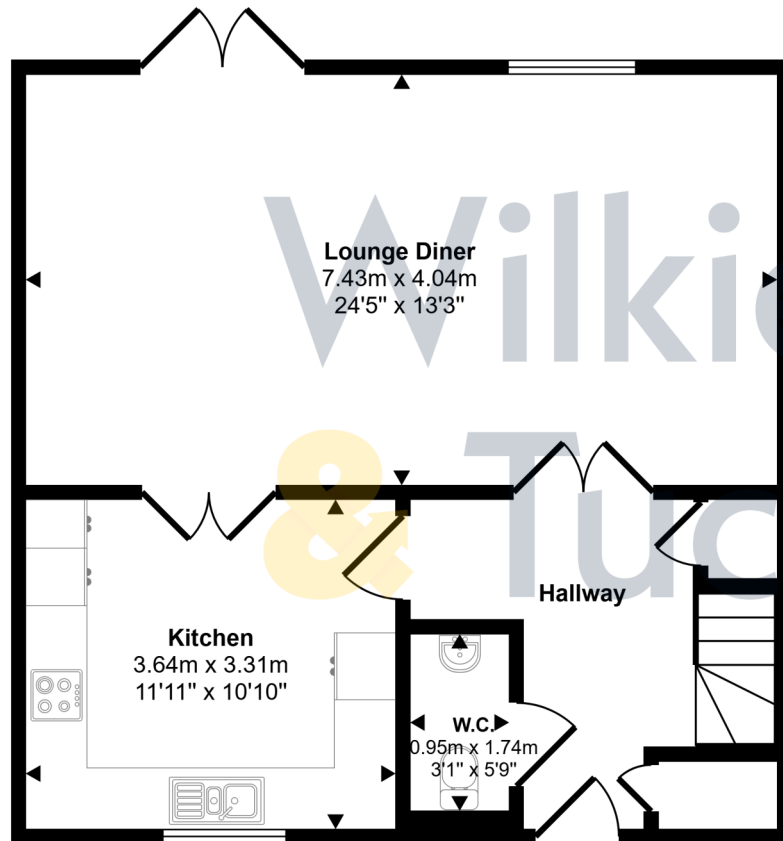
Periton Mead, Periton Road,
Minehead, TA24 8DW
Price £395,000 Freehold



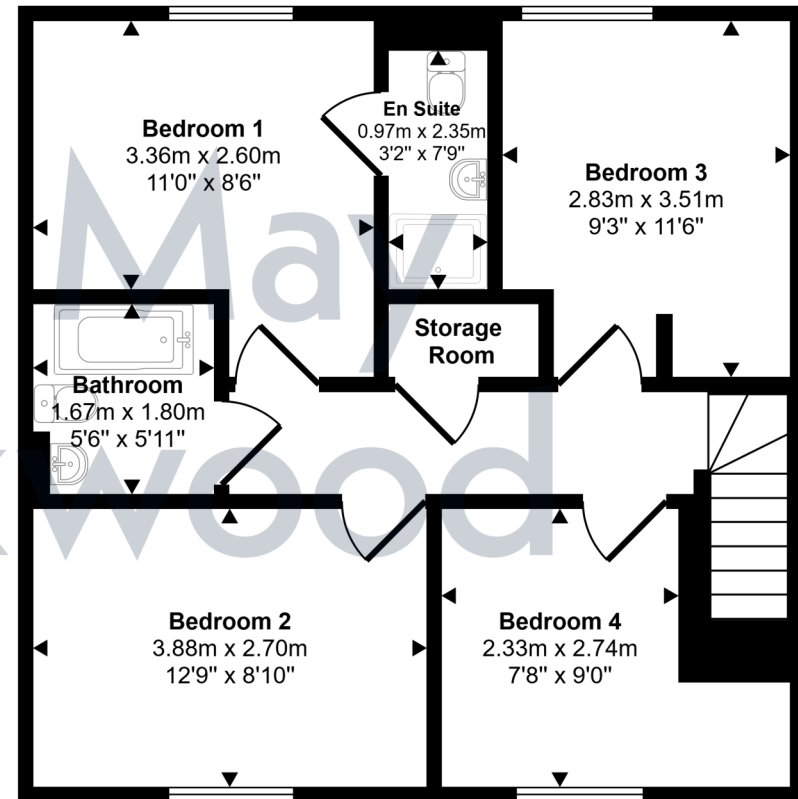
Wilkie May
& Tuckwood

Floor Plan

Approx Gross Internal Area
111 sq m / 1190 sq ft



Ground Floor
Approx 55 sq m / 596 sq ft



First Floor
Approx 55 sq m / 594 sq ft

This floorplan is only for illustrative purposes and is not to scale. Measurements of rooms, doors, windows, and any items are approximate and no responsibility is taken for any error, omission or mis-statement. Icons of items such as bathroom suites are representations only and may not look like the real items. Made with Made Snappy 360.

Description

A brand new four bedroom end-of-terrace house situated within the Periton Mead development on the outskirts of Minehead constructed by Ware Developments.

Built to a high specification, the property features highly insulated timber-framed construction with Newbridge stone elevations, a slate roof, full uPVC double glazing and gas fired central heating.

Other benefits include solid oak doors throughout, an open plan living/dining room, a separate kitchen with integrated appliances, a cloakroom, an en-suite to one of the bedrooms, two off road parking spaces and a garden.

- High quality construction
- 4 bedrooms one with en-suite
- 2 parking spaces
- Private garden
- 10 year residential Warranty



Wilkie May & Tuckwood are delighted to be able to offer this brand new four bedroom end-of-terrace house.

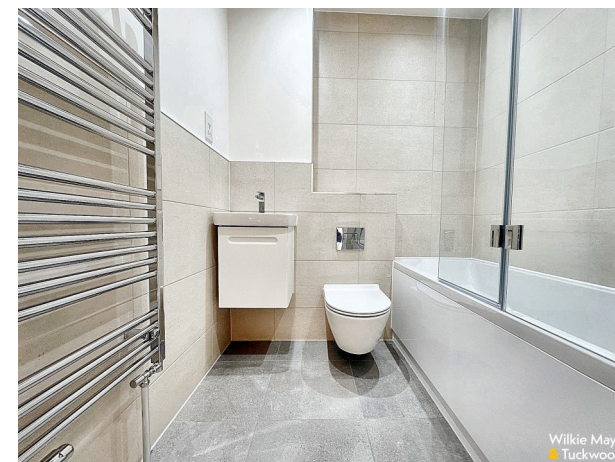
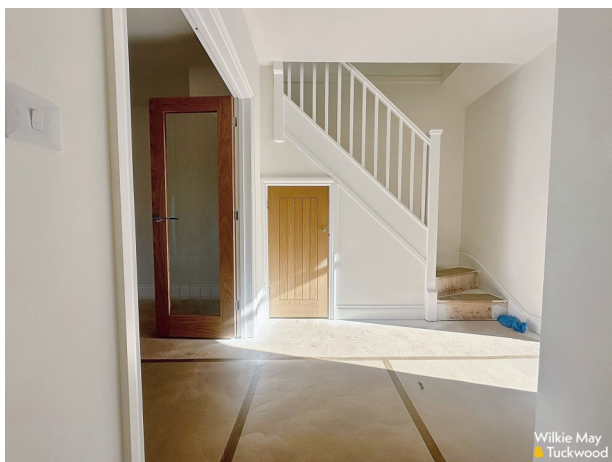
The accommodation comprises in brief: entrance through front door into hallway with stairs to the first floor, understairs storage cupboard, door to the fitted cloakroom and kitchen and double doors opening into the lounge diner.

The lounge diner is a large room with window to the rear and French doors opening out to a patio area which gives access to the garden. Double doors open into the kitchen which is fitted with an extensive range of wall and base units, sink and drainer incorporated into work surface and integrated appliances to include a double oven, hob with extractor hood over and fridge freezer. There is also space for a washing machine and a window to the front.

To the first floor there is a landing area with storage cupboard and doors to the bedrooms and bathroom. Two of the bedrooms have aspects to the rear, one with an en-suite shower room. The remaining two bedrooms have aspects to the front. There is also a fitted bathroom.

Outside, immediately to the rear there is a walled patio area with steps leading down to the remainder of the garden which is laid to lawn.

AGENT NOTE: A management company is being set up to cover maintenance of the common areas. The projected cost is in the region of £650.00 per annum.



GENERAL REMARKS AND STIPULATION

Tenure: The property is offered for sale freehold by private treaty with vacant possession on completion.

Services: Mains water, mains electricity, mains drainage and gas fired central heating.

Local Authority: Somerset Council, Deane House, Belvedere Road, Taunton TA1 1HE

Property Location: [///presenter.topping.overture](http://presenter.topping.overture) **Council Tax Band:** TBA

Broadband and mobile coverage: We understand that there is good mobile coverage. The maximum available broadband speeds are 1800 Mbps download and 220 Mbps upload. We recommend you check coverage on <https://checker.ofcom.org.uk/>. **Flood Risk: Surface Water:** Very low risk **Rivers and the Sea:** Very low risk **Reservoirs:** Unlikely **Groundwater:** Unlikely. We recommend you check the risks on <http://www.gov.uk/check-long-term-flood-risk> **Planning:** Local planning information is available on <http://www.somersetwestandtaunton.gov.uk/asp/>

IMPORTANT NOTICE Wilkie May & Tuckwood for themselves and for the vendors of the property, whose agents they are, give notice that: 1. the particulars are intended to give a fair and substantially correct overall description for the guidance of intending purchaser and do not constitute part of an offer or contract. Prospective purchasers and lessees ought to seek their own professional advice.

2. All descriptions, dimensions, areas, reference to condition and necessary permissions for use and occupation and other details are given in good faith, and are believed to be correct, but any intending purchasers should not rely on them as statements or representations of fact, but must satisfy themselves by inspection or otherwise as to the correctness of each of them. 3. No person in the employment of Wilkie May & Tuckwood has any authority to make or give any representations or warranty

whatever in relation to this property on behalf of Wilkie May & Tuckwood, nor enter into any contract on behalf of the vendor. 4. No responsibility can be accepted for any expenses incurred by intending purchasers in inspecting properties which have been sold, let or withdrawn. Photographs taken and details prepared November 2025. . MEASUREMENTS AND OTHER INFORMATION All measurements are approximate. While we endeavour to make our sales particular accurate and reliable, if there is any point which is of particular importance to you, please contact the office and we will be pleased to check the information with you.

Code of Practice for Residential Estate Agents: Effective from 1 August 2011:

'8. Financial Evaluation 8a At the time that an offer has been made and is being considered by the seller, you must take reasonable steps to find out from the prospective buyer the source and availability of his funds for buying the property and pass this information to the seller. Such information will include whether the prospective buyer needs to sell a property, requires a mortgage, claims to be a cash buyer or any combination of these. Such relevant information that is available should be included in the Memorandum of Sale having regard to the provisions of the Data Protection Act.8b These reasonable steps must continue after acceptance of the offer until exchange of contracts (in Scotland, conclusion of missives) and must include regular monitoring of the prospective buyer's progress in achieving the funds required, and reporting such progress to the seller.

The agent has not tested any apparatus, equipment, fixtures and fittings or services and so cannot verify that they are in working order or fit for their purpose. A Buyer is advised to obtain verification from their solicitor or surveyor. References to the Tenure of the Property are based on information supplied by the Seller. The agent has not had sight of the title documents. A Buyer is advised to obtain verification from their Solicitor.



Tel: 01643 704400

6 Wellington Square, Minehead, Somerset, TA24 5NH

